



VERTEL

Your smart choice Walky Talky

The **Walky Talky** is a cost effective radio featuring reliable performance. As soon as it came in the market, it was warmly welcomed by the old and new clients and distributors.

"Channel annunciation" and "emergency alarm are two of the favourite features of security men.

The radio features, compact and elegant shape, easy carrying, waterproof structure and crisp voice; is an ideal communication tool for users of **department stores, restaurants, hotels, recreation and leisure centers, fieldwork, construction, estate management, security patrolling, factory dispatching, etc.**



Portable Radio



ADVANTAGES

Squelch Level Programmable

Squelch reduces background noise and improves sound quality. Squelch level, adjustable by PC software makes the radio capable of being widely used in various environments.

CTCSS/DCS

To prevent unwanted conversations on the same frequency CTCSS/DCS encoder and decoder can prevent interference on the same frequency from other communication groups.

Auto Power Saving

Auto power saving can prolong the talking time and stand-by time. 10 seconds after no signals or operation, the auto power-saving is activated to minimize power consumption. It resumes to normal mode while receiving signals or being operated.

Channel Annunciation

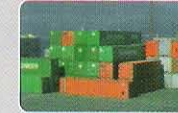
Channel Annunciation offers convenience to users in special applications, such as working in the darkness. The annunciation could be programmed in different languages.

Emergency Alarm

Press the emergency call button, and loud alarm sounds notify your partners, warn and stop dangerous people.

Li-poly battery with 1200mAh capacity.

A new battery chemistry coupled with high capacity ensures long talk time and battery life.



GENERAL FUNCTIONS

10 Preprogrammed Channels

10 communication channels and 1 scan channel provide flexible channel assignments among different user groups. Provision exists for additional channels whenever released by Government of India.

Multiple Scanning

Scan channel is convenient for the team leader to monitor the on-site situations. The scanning mode and scanning priority is programmable.

Low Battery Alert

When the battery power is low, the working status indicator flashes red, reminding you to recharge or replace the battery.

Time Out Timer

When TOT is on and the transmission exceeds the preset time limit, the radio will stop transmitting after warning tone. TOT can prevent the radio from any potential damage caused by prolonged transmission and to maintain network discipline.

Busy Channel Lockout (BCL)

BCL is used to prevent the interference with the on-going conversation. If BCL is "On" and you press the PTT button, the radio will not transmit signals and remains in the receiving state to avoid interfering with others that are in communication.

Monitor

To monitor whether the current channel has any signal, press the MONI key. The MONI function is to receive weak signal.

PC Programmable

With the optional programming cable, the parameters on radio could be configured by PC software

Data Cloning

To quickly set the parameters on a radio, you can clone the radio data from another radio with the data cable, saving the time of parameter setting.

Standard accessories

The standard accessories supplied for the radio have a variety of specification options adaptable to different countries and regions.



KTC-58A1
Charger adapter



KB-42A
Battery pack



KBC-58L
Desktop charger



Antenna



Antenna



Antenna

**Reliable, Efficient, Simple to use
& Cost Effective Communication
tool for your Business**

Optional Accessories:



Leather case



KGS-01
Hand strap



Handheld-Mic



Earpiece-Mic



KSPL-02
Programming cable



KCL-01
Cloning cable

Walky Talky

SPECIFICATIONS

General

Frequency range	350MHz
Channel capacity	10 Preprogrammed
Channel spacing	12.5 KHz
Operating temperature	-25°C ~+55°C
Battery(Standard)	Li-poly 1200mAh,7.4V
Dimension(W×H×D)	56.5 mm × 102 mm × 29.5 mm
Weight	120g(main unit); 235g(with battery and antenna)

Receiver

Sensitivity (12dB SINAD)	0.25 μ V
Operating band width	\pm 7KHz
Adjacent channel selectivity	\geq 70dB/ \geq 60dB
Intermodulation reject ratio	\geq 65dB
AF output power	500mW (16 Ω distortion less than 10%)

Transmitter

RF power	4W/1W
Modulation type	11KOF3E
Spurious and harmonics	\leq -70 dB
Residential FM(300~3000Hz)	\leq -45dB or \leq -40dB
FM distortion(300~3000Hz)	\leq 5%
Frequency stability	\pm 2.5ppm
Maximum frequency deviation	\pm 2.5kHz

NOTICE: The specifications may be subject to change without notice due to advancement in technology.

For more information, please contact:

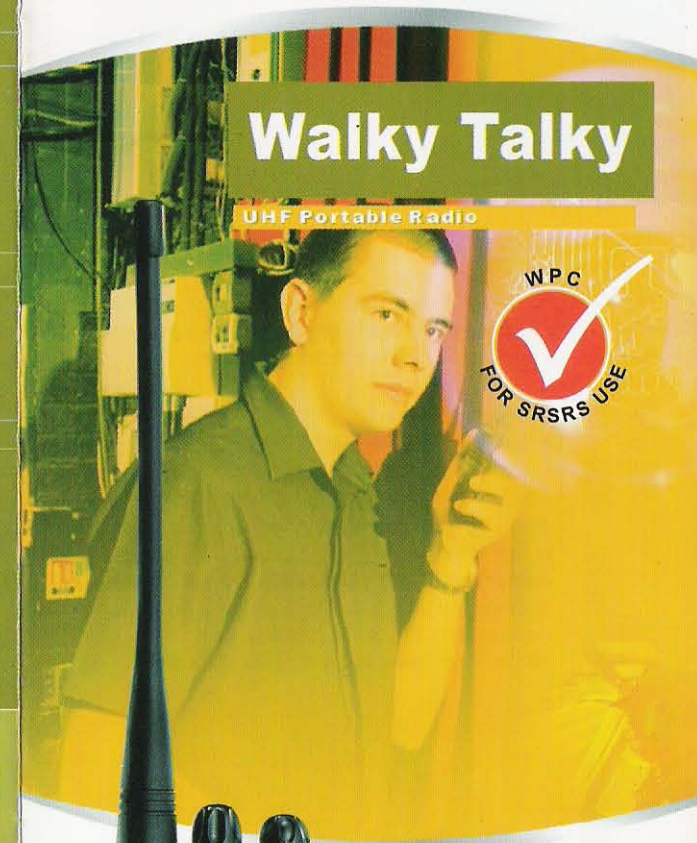
Global Tele Communications

MIG-351, Ground Floor, Balaji Nagar, Kukatpally,
Hyderabad-72, AP. PH:040-65907456, FAX:040-23158992.

Email:global_india4@rediffmail.com,

WEB: www.globaltelecomm.in

VERTEL



- 350 MHz Radio under SRSRS Ministry of Communications
- Cost Effective
- Clear and Crisp Voice
- Long Communication Range
- Waterproof and Rain-resistant
- Emergency Signaling
- Easy Licensing Scheme of WPC, Government of India