

GARMIN Fishfinder 350C



Garmin Fishfinder 350C is an all-rounder and with reasonable price tag fish finder. Fishfinder 350C scans water with 300 watts (RMS) power and extra-sensitive Garmin HD-ID™ target tracking technology. A dual-beam transducer optimizes performance for deep or shallow water, offering wide-angle (up to 120°) coverage to target fish beyond the sides of your boat and the ability to scan bottom profiles down to 1,500 feet.

5" sunlight-readable WQVGA display

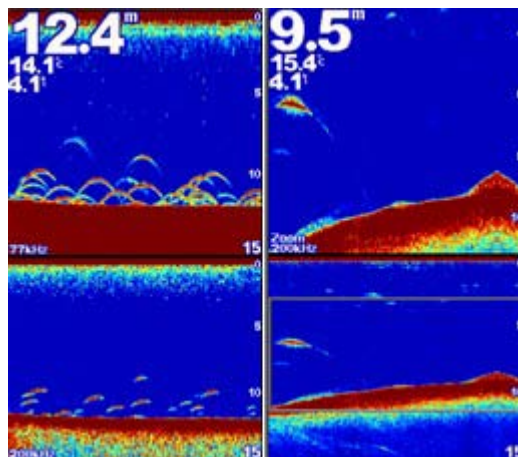
Fishfinder 350C comes with a high resolution (272 x 480 pixels), full colors (256 colors), and Sunlight-Readable 5" WQVGA display. Its sharp color helps you never lose any fish.

Dedicated button for most common used function

Benefit for the professional fishermen like you, Fishfinder 350C features with dedicated button on its right side for you to quickly adjust the setting you need for "Gain", "Range", and "Zoom" function.

Up-and-down split screen

Putting its 5" WQVGA display vertically, Garmin offers you an intuitive comparison when using the "Split Screen" on **Zoom** or **Dual Frequency** page.



Quick installation mount

Are you worried about your Fish Finder being stolen? Easily remove Fishfinder 350C from mount and take the device with you off boat. The Fishfinder 350C is one of the most intuitive fishfinders in the market. Installation takes only a few minutes with using the tilt/swivel mount and versatile transom/trolling motor-mount transducer included in the box.



Physical & Performance:	
Unit dimensions, WxHxD:	6.0" x 5.9" x 1.8" (15.2 x 15.0 x 4.6 cm)
Display size, WxH:	2.9" x 4.0" (7.4 x 10.16 cm); 5" diag, (12.7 cm)
Display resolution, WxH:	272 x 480 pixels
Display type:	WQVGA, 256 colors
Weight:	17.6 oz (499 g)
Waterproof:	yes (IPX7)
Features:	
Audible alarms:	yes
Dual-frequency sonar capable:	no
Dual-beam sonar capable :	yes
Split-screen zoom:	yes
Ultrasroll™ (displays fish targets at higher boat speeds):	yes
Fish Symbol ID (helps identify fish targets):	yes
AutoGain Technology (minimizes clutter, maximizes targets):	yes
Whiteline (indicates hard or soft bottom):	no
Adjustable depth line (measures depth of underwater objects):	yes
A-scope (real time display of fish passing through transducer beam):	Yes
Bottom lock (shows return from the bottom up):	Yes
Water temperature log and graph:	Yes
Water temperature sensor included:	yes
Water speed capable (displays speed on water):	yes
Other:	
Frequency:	200/77 kHz
Transmit power:	300W (RMS)/2,400W (peak to peak)
Voltage range:	10V - 28V input
Maximum depth:	1,500 ft freshwater*/ 600 ft saltwater*
Cone angle:	60° or 120° (dual beam)
Additional:	*Depth capacity is dependent on water bottom type and other water conditions.

What's in the Box:

- Fishfinder 350C
 - Quick release mount with tilt and swivel
 - Power cable
- Transducer w/ mounting bracket, hardware and trolling motor clamp
 - Documentation

Local Dealer / Distributor.

GLOBAL TELE COMMUNICATIONS

MIG-351, Ground Floor, Balaji Nagar, Kukatpally, Hyderabad-500072, AP, INDIA.
 PH : 91-40-65907456, FAX : 91-40-23158992, Mobile : 91-9866661290.
 WEB: www.globaltelecomm.co.in, Email: info@globaltelecomm.co.in